



# ROSEVILLE KIDICARE

PRESCHOOL | KLEUTERSKOOL



Here, our friends learn to socialize, cultivate love and build friendships in the "play-play" way. Each toddler is seen as a special individual with his own character traits and personality. We believe that a child should remain a child for as long as possible.

### **Our Mission:**

We strive to raise happy children and help each child reach their full potential.

### **Our Vision:**

Our vision is to teach children everything they will need to tackle the "big world" out there in a "play-play" way. We want to meet the cognitive, emotional, spiritual and physical needs of every child. We want to equip every child to be a creative thinker, adaptable and innovative.



### **We work on the following learning areas:**

Physical development (gross and fine motor skills)

Social-emotional development

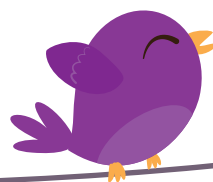
Language development

Mathematics, Science, Technology

Cognitive development

Creativity

### **We follow the ELDA Curriculum**





## How does our day program look?

Breakfast

Academic Program begins...

(Bible, singing, theme discussion, rhyming, perception, creative arts, science, maths, make-and-bake)

Morning Snack

Academic Program continuous...

(gross and fine motor activities, music)

Lunch

Story Time

Bedtime

Outside Play

Afternoon Snack

## What is on our menu?

We offer healthy and balanced meals during the day. We provide breakfast, lunch as well as morning and afternoon snacks. On Fridays, our little friends enjoy "treat time".

# School Fees

## Registration Fee

R1 000.00 per child

The registration fee is a one-off amount that must be paid in full before your child can start with us. The registration fee covers the following:

- A school shirt
- A new facecloth with your child's name on
- A new communication book (every year)
- Printed photos during the year

## Half Day Fee

06:00 - 14:00

Babies and toddlers (3 months to 36 months): R2 250.00 per month

Toddlers (3 years to 6 years): R1 900.00

**Note: The toddlers 3+ years must be completely off the diapers before the fee is reduced!**

## Full Day Fee

06:00 - 18:00

Babies and toddlers (3 months to 36 months): R2 500.00 per month

Toddlers (3 years to 6 years): R2 200.00

**Note: The toddlers 3+ years must be completely off the diapers before the fee is reduced!**

Each subsequent child will receive R200.00 discount on the school fee.

## Yearly Fee

The annual fee amounts to R800.00 per child. This fee covers creative art needs, "messy play," snacks, make-and-bake needs as well as all visits that take place during the different terms.

This fee is strictly payable at the beginning of each new year.

## Jaarlikse benodighede

1 Pack Typex Unrolled Paper (500 pages)

4 Large Boxes of Tissues

6 Packs of Wet Wipes (Only Pampers, Huggies, Cherubs "burn")

10 Rolls 1Ply Toilet Paper (Twinsaver "brand" only)





## Banking Details:

First National Bank  
Roseville Kidicare / EWJ Maritz  
Cheque Account  
Account Nr.: 625 021 222 11  
Branch Code: 250 655

